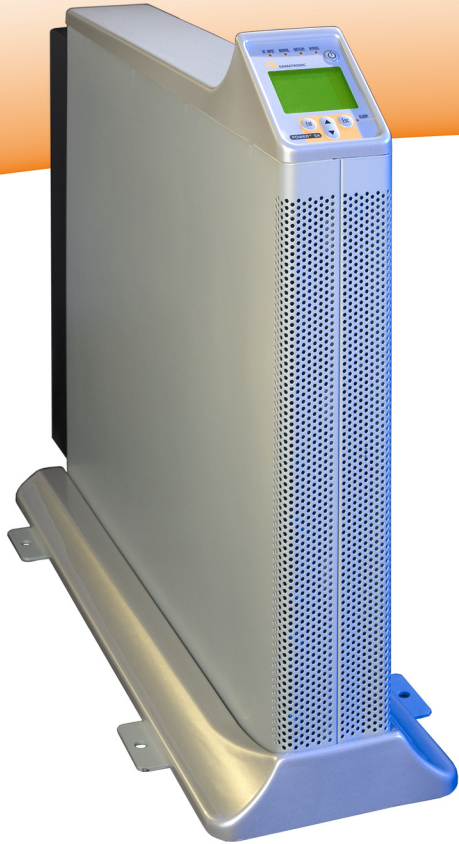


THE NEXT GENERATION IN MODULAR UPS GAMATRONIC POWER+

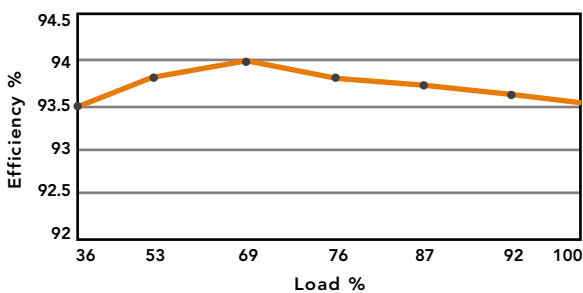
The Gamatronic Power+ SA3 three-phase UPS system employs a compact, lightweight form factor that conserves precious floor space. Its simple, reliable design offers a cost-effective solution to protect critical electronic equipment. The Power+ operates at super-high 94% efficiency, which means less heat and lower cooling costs, too.



POWER+ SA3 CLASSIC THREE-PHASE 10kVA UPS

- Double-conversion power provides completely clean, consistent AC output to the data center power bus.
- True online battery is galvanically connected to the rectifier and inverter on a common DC link for increased reliability.
- Compact, lightweight UPS is just 3.5" wide and weighs 46 lbs.
- Matching external battery cabinet provides 11 minutes of runtime at full load.
- Highest AC-AC efficiency rating of 94% results in lower energy costs and reduced heat.
- LCD display and indicator LEDs provide at-a-glance system status.
- Wide input voltage window (-25% to +15%) ensures output power remains continuous regardless of input fluctuations without using the battery.
- Static switch ensures fast, safe transfer to backup.
- Separate bypass input with removal of jumpers.
- Full 2-year warranty on UPS and Matching Battery.

Power+ AC to AC Efficiency



POWER+ SA3 CLASSIC THREE-PHASE TECHNICAL SPECIFICATIONS				
Model SA3	10kVA			
Capacity kVA / kW	10 / 8			
Topology	On-line Double Conversion			
Input				
Voltage	208V Three-Phase, L1, L2, L3, N			
Voltage Range	-25% to +15%			
Current	29.6 Amps – No inrush current at Startup			
Frequency (Hz)	47 - 63			
Power Walk In	> 60 seconds			
Current Distortion (THDI)	5% at full load			
Input Power Factor	0.99			
Output				
Voltage	120 / 208V Three-Phase, L1, L2 L3, N			
Current	27.8 Amps			
Frequency Tracking Range	60Hz +/-2Hz			
Static Regulation	+/-1%			
Regulation for Unbalanced Load	+/-1% for 100% Unbalanced load			
Dynamic Response to 100% Step Load	+/-2%			
Overload	110% for 10 min; 125% for 60 sec; 1000% for 1 cycle			
THD	Less than 2% for linear load			
Load Crest Factor (Max)	4:1			
Efficiency (Nominal)	AC/AC 94% on-line, DC/AC 97%			
Internal Bypass Switch				
Type	Static Switch with Wrap-around Contacts			
Input Connections	Separate Bypass Input with Removal of Jumper			
General UPS				
Ambient Temperature	14°F to 104°F (operating), -4 to 140°F (storage)			
Acoustic Noise (Full Load) @ 1.5M (dB)	51			
Maximum Heat Dissipation (btu/h)	1740			
Relative Humidity (%)	Max 95, non-condensing			
Altitude (m)	1500 without derating			
UPS Dimensions (HxWxD)	22.0" x 3.5" x 23.6"			
UPS Weight (lbs)	46 (shipping weight 62)			
General Matching Battery Cabinet				
Battery Type	(32) EnerSys NPX-35FR or equal			
Battery Cabinet Dimensions (HxWxD)	21.3" x 10.3" x 23.6"			
Battery Cabinet Weight (lbs)	220 (shipping weight 260)			
Runtime %Load / Minutes	100% / 11	75% / 16	50% / 28	25% / 50
Communication				
Display	LCD with Backlight, Status LEDs			
Communications	RS232 Standard, SNMP Optional			
LCD Data				
AC Input / Output	Voltage and Current per Phase, Frequency			
Battery	Voltage and Status			
On Screen Status	System Mode, % Load per Phase, Battery Charge, Alarms			
Output Contacts	Line Fail, Low Battery, General Fault			
Alarms	Input & Output Fail, Battery Low, Battery Test Fail, Bypass Not Ready, Load on Bypass, Overload			
LEDs	AC Input, Normal, Battery, Bypass, Alarm			
Log (events memory)	200 Events			
Standards				
EMC Emission	IEC62040-2; FCC part 15 / 8			
Safety	UL 1778; IEC62040-1-1			
Battery/Charger				
DC Link Voltage Nominal	384V (+192, -192)			
Max Charging Current at full load (amps)	4.5			



The Power+ is made in Israel by Gamatron, a leading innovator in power electronics since 1970. Gamatron products are distributed worldwide, are UL-approved and ISO9001 compliant.